



**COMPLETE FIELD
MAINTENANCE**



DRILL SUPPORT

**CAPABILITY
STATEMENT**

**BUILT FOR UPTIME.
DELIVERED WHEN IT MATTERS.**



PARTS | SERVICE EXCHANGE | REBUILDS | ENGINEERED DRILL SOLUTIONS



“Our advantage is focus. Drills are not a side capability for CFM – they are the business.”



DRILL SUPPORT CAPABILITY OVERVIEW

Complete Field Maintenance (CFM) is a specialist drill support business focused exclusively on drill parts, Service Exchange (SX), rebuilds, reverse engineering, and complete drill rebuild programs across the mining sector.

CFM supports drill fleets across surface, underground, and exploration environments, with capability across platform drills, boom style drills, production drills, and legacy fleets. We support major OEM brands including Epiroc, CAT, Sandvik, and other established drill platforms without being tied to a single OEM pathway.

Our capability spans individual component supply, full machine rebuilds, shutdown execution, rotatable asset management, lifecycle extension, and engineered product improvement. The focus is simple: reliable parts, fast turnaround, and practical solutions that keep drills turning.

“CFM lives and breathes drills - our business is built around keeping drill fleets productive, reliable, and working.”



WHO WE ARE

CFM is a purpose-built drill support business structured specifically around the requirements of mining drill fleets.

Established in 2007, CFM has built a reputation as a specialist drill support business focused exclusively on keeping drill fleets productive, reliable, and operational.

With a combined 93 years of industry experience across the leadership team, CFM brings extensive operational, rebuild, engineering, and drill maintenance knowledge across both surface and underground mining operations.

Unlike general maintenance providers, CFM is not trying to support every asset class across a mine site. We focus on drills, drill components, drill rebuilds, and the systems that keep drills operational.

- OEM and aftermarket parts supply
- Service Exchange (SX) programs
- Component rebuilds
- Complete drill rebuilds and life extension programs
- Reverse engineering and engineered product improvement
- Shutdown execution support
- Rotable asset management and capital deferral strategies

“Our advantage is focus. Drills are not a side capability for CFM – they are the business.”



FACILITY & WORKSHOP CAPABILITY

CFM operates from a dedicated 2,400sqm rebuild and manufacturing facility in Perth, Western Australia, equipped with overhead cranes, purpose-built rebuild bays, specialised tooling, and a dedicated parts and dispatch centre. The facility is built to support both ongoing operational maintenance and larger rebuild campaigns.

- Multiple simultaneous machine rebuilds
- Major assembly rebuild and staging programs
- Precision component rebuilds
- Structural repair and refurbishment
- Hydraulic and mechanical rebuild programs
- Hose and electrical harness manufacture
- Rapid turnaround Service Exchange support

“Our workshop has been purpose-built around drill rebuilds and Service Exchange support - not adapted from general maintenance operations.”



DRILL FLEET SUPPORT

CFM supports drill fleets across surface, underground, and exploration sectors, covering both platform and boom style drill applications. Our model is OEM-agnostic, allowing sites to work with CFM across mixed fleets, standardised fleets, and legacy platforms.

SUPPORTED BRANDS & FLEET TYPES

- Major OEM brands including Epiroc, CAT, Sandvik, and legacy drill platforms
- Surface production and blast hole drill fleets
- Underground and boom style drill platforms
- Exploration drill applications both RC and Diamond drill disciplines
- Platform drill structures, mast systems, feed systems, boom systems, rotary and hydraulic systems

“Whether it is surface, underground, exploration, platform, or boom style drilling, CFM understands the pressure to keep productive rigs online.”

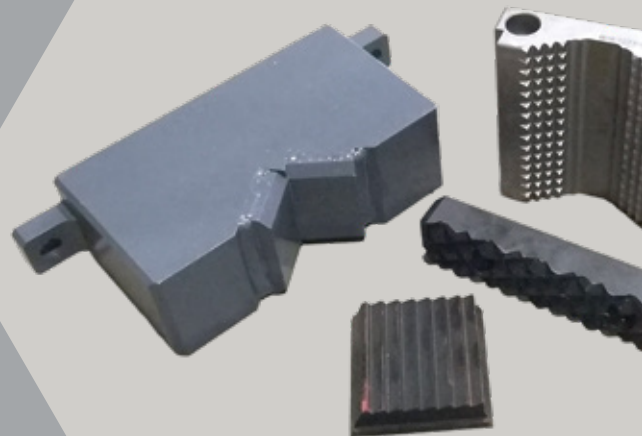


PARTS SUPPLY CAPABILITY

CFM provides comprehensive drill parts support across major drill systems and assemblies, including OEM replacement components, aftermarket supply pathways, Service Exchange assemblies, and engineered alternatives where appropriate.

- Engines, compressors, and pump groups
- Rotary heads and feed systems
- Hydraulic systems and cylinders
- Track frames and undercarriage systems
- Hose kits and electrical harnesses
- Structural assemblies, boom systems, and mast systems
- Carousel systems, cooling systems, and rotatable assemblies

“CFM does not just supply parts - we look at what fails, why it fails, and how to improve the outcome.”



MATERIAL INTEGRITY & PRODUCT PERFORMANCE



Drill components operate in high-load, high-wear environments where material selection directly impacts reliability, wear life, and total operating cost.

CFM places strong emphasis on selecting materials suited to the application, rather than defaulting to general-purpose steels or low-cost substitutes.

To support this approach, CFM also maintains in-house material testing capability, allowing components to be analysed and verified to ensure metallurgy, hardness, and material composition are aligned to the application and performance requirements.

THIS CAPABILITY SUPPORTS:

- Material verification and quality assurance
- Reverse engineering and OEM comparison
- Identification of material upgrade opportunities
- Improved repair compatibility and weld integrity
- Consistent component performance and reliability

THE RESULT IS:

- Improved wear life
- Reduced deformation under load
- More consistent performance in high-impact conditions
- Reduced change-out frequency
- Improved component reliability

Mining drills are hard on components. Material selection matters, and CFM does not take shortcuts where reliability is on the line.

“CFM focuses heavily on practical engineering and material integrity—because the wrong material in a high-wear application always becomes a reliability issue later.”



SERVICE EXCHANGE (SX) PROGRAMS

CFM provides structured Service Exchange programs designed to minimise downtime, simplify maintenance planning, and provide access to rebuilt assemblies when sites need them. Service Exchange is central to CFM's ability to reduce turnaround time and improve fleet availability.

- Fully rebuilt and tested assemblies ready for installation
- Fleet-aligned exchange programs
- Traceable rebuild history and quality assurance
- Rapid turnaround support
- Planned rotatable exchange strategies
- Support for rotary heads, feed systems, boom assemblies, track frames, compressors, hydraulic systems, carousel assemblies, and engine or pump groups

"The aim is simple - have critical assemblies ready to bolt in before downtime turns into lost production."

DRILL REBUILD CAPABILITY

CFM delivers both component-level rebuilds and complete drill rebuild programs across multiple drill platforms. Our rebuild capability provides mining operations with an alternative to full OEM replacement strategies, supporting asset life extension while maintaining reliability and operational performance.

- Major overhauls and life extension programs
- Structural refurbishment and repair
- Full hydraulic and mechanical rebuilds
- Machine strip, inspection, and reassembly
- Electrical and control system refurbishment
- Undercarriage and track frame replacement
- Boom, mast, and feed system rebuilds

“CFM is not just rebuilding components - we are rebuilding complete drill systems with reliability, execution quality, and uptime at the centre of the process.”





RAPID REBUILD METHODOLOGY

CFM's rebuild philosophy is centred around minimising downtime through a modular rebuild methodology designed to operate more like a planned pit stop than a traditional sequential rebuild process. Wherever practical, CFM pre-builds, tests, and stages major assemblies before the drill arrives. Once the machine is in the workshop, the rebuild becomes a structured change-out execution rather than waiting for every major component to be stripped, assessed, rebuilt, and reinstalled sequentially.

- Engine / compressor / pump group assemblies
- Cooler group assemblies
- Complete boom assemblies
- Feed beam and carousel assemblies
- Track frame and undercarriage assemblies
- Hydraulic hose and electrical harness packages

This methodology reduces critical-path rebuild duration, improves labour efficiency, reduces workshop bottlenecks, and provides greater execution certainty.

“Pre-build, stage, change out, commission, and return the drill to work. That is the CFM rebuild mindset.”



COMPONENT REBUILD CAPABILITY

In addition to full machine rebuilds, CFM delivers precision rebuilds across major drill components under controlled workshop conditions. Component rebuilds are supported by detailed inspection processes, repeatable rebuild standards, quality assurance, skilled trades, and specialised tooling.

- Rotary heads
- Feed systems and cylinders
- Track frames and structural assemblies
- Compressors and cooling systems
- Hydraulic systems
- Boom assemblies
- Carousel systems

“Every rebuild completed through CFM is designed around repeatability, reliability, and extending usable component life.”



REVERSE ENGINEERING & ENGINEERED PRODUCT IMPROVEMENT

CFM is committed to delivering value beyond standard supply through engineered improvement and reverse engineering capability. Where components are failing, wearing prematurely, or creating unnecessary cost, CFM can assess, measure, analyse, and develop improved alternatives where appropriate.

- Reduce reliance on OEM supply chains
- Improve component life and reliability
- Deliver cost-saving alternatives
- Improve overall product performance
- Match or exceed OEM material specifications where required
- Select improved materials where performance gains can be achieved

“CFM focuses on practical engineering improvements - not just copying components, but identifying opportunities to improve reliability and service life.”

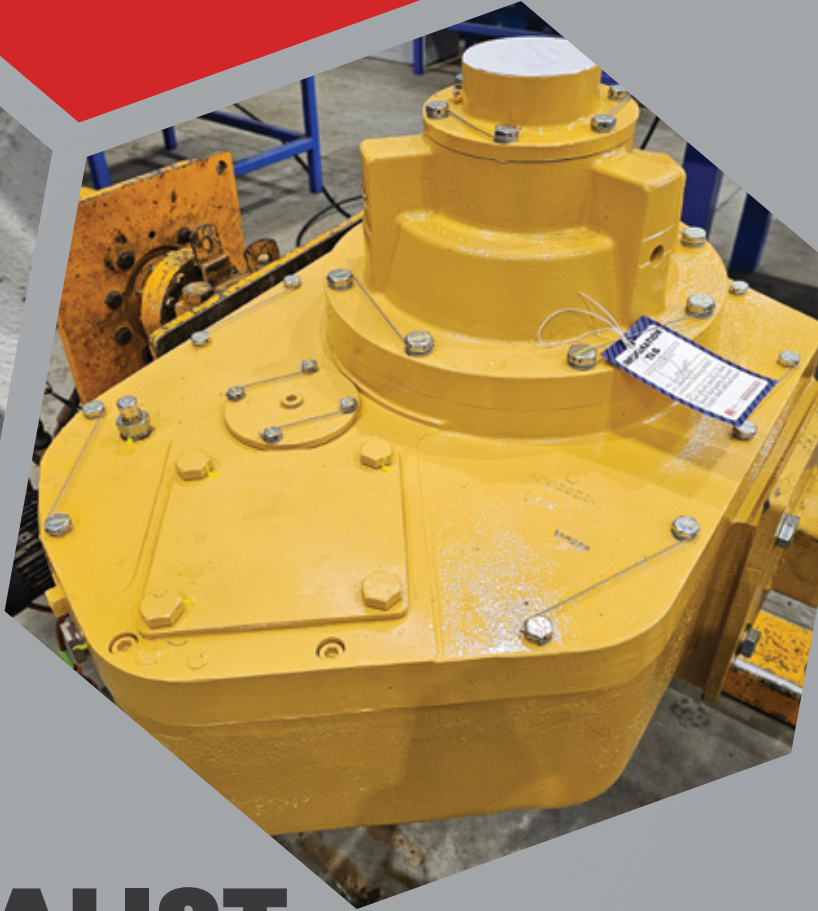


ROTABLE ASSET & CAPITAL DEFERRAL STRATEGIES

CFM supports mining operations through the establishment and management of rotatable asset pools aligned to fleet requirements. When integrated with Service Exchange and rebuild programs, this model helps sites maintain uptime while reducing capital pressure.

- Defer capital expenditure on high-value components
- Maintain access to critical assemblies through managed rotation
- Improve fleet availability and maintenance planning
- Reduce downtime associated with long lead-time items
- Convert fixed capital into flexible operational expenditure

“A well-managed rotatable strategy allows sites to maintain uptime without continually tying up capital in spare assemblies.”



WHY SPECIALIST DRILL SUPPORT MATTERS

Mining operations rely heavily on internal maintenance teams to support fleet reliability across a broad range of equipment and operational priorities. While those teams play a critical role, drill rebuilds and specialised drill support are often only one component within a much larger maintenance function.

CFM operates differently.

Drill support is not a secondary capability within the business – it is the core focus of the business itself. Every process, system, tool, engineering improvement, and commercial decision is centred around improving drill performance, reducing downtime, and returning equipment to service faster and more reliably.

Because CFM is commercially tied to rebuild efficiency, turnaround performance, component reliability, and long-term customer outcomes, there is a strong operational incentive to continuously improve performance and eliminate unnecessary downtime.

This specialist model provides several operational advantages:

- Reduced rebuild bottlenecks and competing workshop priorities
- Faster turnaround through staged Service Exchange and rotatable strategies
- Greater flexibility across OEM brands, drill types, and fleet applications
- Dedicated drill rebuild infrastructure, tooling, and repeatable processes
- Practical engineering improvements developed specifically for drilling applications
- Improved scalability during shutdowns and rebuild campaigns
- Reduced operational burden on site-based maintenance teams
- Strong commercial alignment to uptime, reliability, and operational outcomes

“When drills are the sole operational focus, every decision is made around keeping drill fleets productive, reliable, and operating efficiently.”





SHUTDOWN & FIELD SUPPORT

CFM can support both workshop and site-based execution requirements. Rebuilds do not finish at the workshop door - commissioning, operational handover, shutdown support, and site engagement are critical parts of successful execution.

- Shutdown support
- Commissioning assistance
- Site labour support
- Machine inspections and scope evaluations
- Rebuild planning support
- Fleet condition assessments

“Execution, commissioning, and operational handover are critical parts of the process - CFM stays connected to the outcome.”



WHY CFM

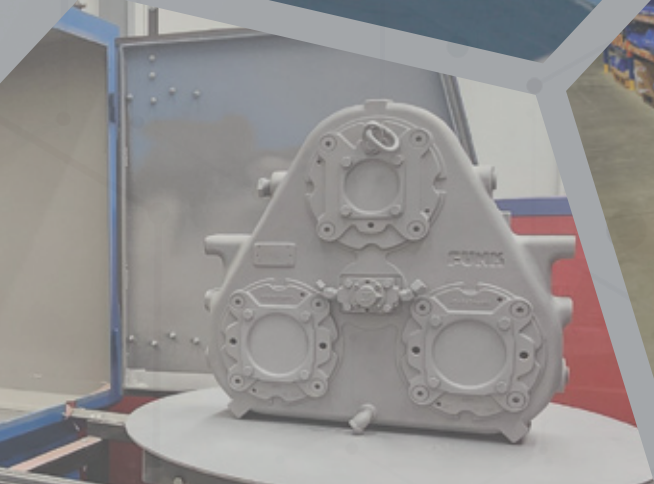
CFM is built around one thing — drilling. Our focus is not simply supplying parts, but delivering practical support solutions that improve reliability, reduce downtime, extend component life, and lower total operating cost across mining drill fleets.

With dedicated rebuild infrastructure, scalable workshop capacity, strong engineering capability, Service Exchange support, capital deferral strategies, and a rebuild methodology designed around minimising downtime, CFM delivers specialist drill support across all stages of fleet lifecycle management.

Established in 2007 and backed by 93 years of combined leadership experience, CFM exists to keep mining drill fleets productive, reliable, and operating efficiently.

CFM is not trying to support every asset class across a mine site — we focus on drills, rebuilds, uptime, and execution.

“Built for uptime. Delivered when it matters.”





DRILL SUPPORT

**DONE
PROPERLY**

**BUILT FOR UPTIME.
DELIVERED WHEN IT MATTERS.**

T 08 9456 3120 | E SALES@COMPLETEFIELD.COM.AU | W COMPLETEFIELD.COM.AU